

HIGH & DRY



High – adjective

Having a great or considerable extent or reach upward or vertically; lofty; tall

Dry – adjective

Free from moisture or excess moisture; not moist; not wet

Introducing the Envirotech Structures' "High & Dry" – the new definition of a high quality storage structure. While the rectangular shape of the building may be conventional, the engineered features throughout are anything but.

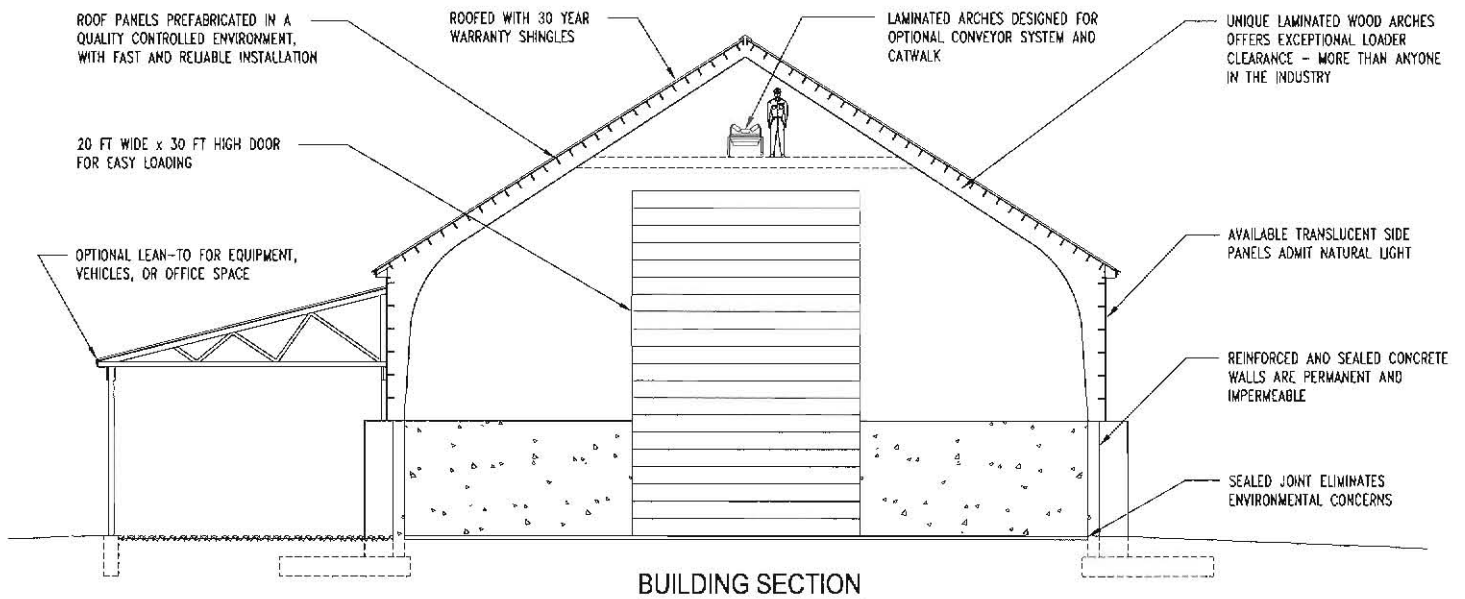


The first thing we looked at when designing the High & Dry was clearance. Our standard thirty foot entranceway and high arches provide more clearance throughout the entire building, more than the competition. Trucks can enter and raise their leads to the maximum height, minimizing loader operation and the potential for incidental damage. Just as importantly, the Envirotech High & Dry gives you the space you need to get your product out fast when it's time to unload your building. For maximizing your operational efficiency, our interior arch supports can be designed to accommodate a conveyor system installed during erection or retrofitted down the road.



The product pressure exerted on the retainer walls of a structure loaded to full capacity can be immense. And when large pieces of equipment are operating inside a building, incidental collisions are a near certainty. The High & Dry was engineered with these two facts in mind.

www.dome-corp-na.com



Our reinforced concrete wall provides greater strength and durability than other wall systems, protecting stored products as well as the integrity of the structure itself. An impervious seal at the base of the wall prevents product lost to leaching and protects the environment from contamination. We also offer building layouts with attached office spaces and lean-tos for storing equipment.

And when form is an important consideration as well as function, Envirotech offers several standard options for the exterior finish of the High & Dry. Vinyl siding, decorative trim, and cupolas are just a few of the features that can make an efficient and functional storage system an aesthetically pleasing one as well. The Envirotech High & Dry is a building with higher clearances, wider storage areas, and the best protection for your products. When you're ready to upgrade your bulk solid storage facilities, call Envirotech Structures for a free quote on our new line of high quality High & Dry Storage Buildings.



“ This professionally managed project was brought in on-time and on-budget. The employees from your fine company worked above and beyond expectations, often continuing in harsh weather conditions, in order to bring the job in on time. The finished building speaks volumes on the high quality craftsmanship your company is capable of. ”

David A. Sheeley
DPW Commissioner
Ulster County, New York



Contact us today for a free quote.

Main Office: 989.777.3456 • Fax: 989.777.3477

East Coast: 973.744.0440 • Fax: 973.744.8759

E-mail: sales@envirotechstructures.net

www.dome-corp-na.com

EnviroTech Structures

A Division of Dome Corp of North America
5450 East Street, Saginaw, MI 48601

